

Fuse-disconnection units

Fuse-switch disconnecter VLD01

Rated current
6, 10, 16 A

Utilization category
AC22

Fuse-switch disconnecter is a protection device with an exchangeable for D01 fuse link. This system enables the following protecting advantages, concerning the D0 fuse:

- Replacement of the fuse-link can be done with a movable holder, without danger of direct contact to the parts under voltage.
- The device can be switched on without screwing, contact pressure is applied automatically by a spring.
- Complete protection against touch by VBG 4.
- In position I and 0, the fuse-link operation indicator is visible through a transparent window.



1-pole

I_n [A]	U_n [V]	Code No.	Weight [g]	Packaging [pcs]
6	230/400	002261001	67	12/108
10	230/400	002261002	67	12/108
13	230/400	002261004	67	12/108
16	230/400	002261003	67	12/108



1-pole + N

I_n [A]	U_n [V]	Code No.	Weight [g]	Packaging [pcs]
6	230	002261016	135	6/54
10	230	002261017	135	6/54
13	230	002261019	135	6/54
16	230	002261018	135	6/54

Fuse-disconnection units

2-pole

I_n [A]	U_n [V]	Code No.	Weight [g]	Packaging [pcs]
6	400	002261006	135	6/54
10	400	002261007	135	6/54
13	400	002261009	135	6/54
16	400	002261008	135	6/54

**3-pole**

I_n [A]	U_n [V]	Code No.	Weight [g]	Packaging [pcs]
6	400	002261011	203	4/36
10	400	002261012	203	4/36
13	400	002261014	203	4/36
16	400	002261013	203	4/36

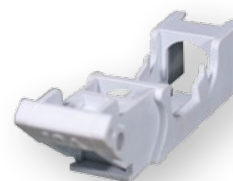
**3-pole + N**

I_n [A]	U_n [V]	Code No.	Weight [g]	Packaging [pcs]
6	400	002261021	270	3/27
10	400	002261022	270	3/27
13	400	002261024	270	3/27
16	400	002261023	270	3/27

Accessories for fuse-switch disconnecter VLD01

Holder

Accessories	Code No.	Weight [g]	Packaging [pcs]
holder/2-6A	002261028	6	15/600
holder/10A	002261029	6	15/600
holder/13A	002261027	6	15/600
holder/16A	002261030	6	15/600



Switch-disconnector-fuse STVD02

Rated current
63 A

Utilization category
AC 22

Switch-disconnector-fuse is a device which combines the functions of the switch and of the fuse D0.

The system enables the following advantages of protection in comparison with the fuse D0:

- The changing of the fuse-link without danger of direct touch of parts under voltage.
- Snap-on mounting on rail according to EN 60715.
- The complete protection against touch according to VBG 4.
- The possibility of connecting supply from the upper or from the lower side.
- It can be used as a main switch and tariff fuse in a single device.
- Possibility of sealing in ON or OFF positions with or without fuse-link.



STVD02

Type	I _n [A]	Code No.	Weight [g]	Packaging [pcs]
STV D02-1	63	002271001	119	12/96
STV D02-1N	63	002271002	238	6/48
STV D02-2	63	002271003	238	6/48
STV D02-3	63	002271004	357	4/32
STV D02-3N	63	002271005	476	3/24

Accessories for switch - disconnector - fuse STVD02



Auxiliary switch PS STV

Type	Code No.	Contacts	Weight [g]
PS STV - MD	002279001	1 x b, 1 x a	50
PS STV - 2M	002279002	2 x b	50
PS STV - 2D	002279003	2 x a	50

a... make contact
b... break contact

Auxiliary switch PS STV is intended to be mounted with switches of series STV D02. The width of apparatus is 9 mm, other dimensions comply with STV D02 series switches.

Auxiliary switch PS STV D02 serves for distant signalization of the state of contacts (on/off) of STV D02 switch, or for circuit control.

Fuse-disconnection units

Gauge piece

I_n [A]	Colour	Code No.	Weight [g]	Packaging [pcs]
20	blue	002243010	0,8	15/300
25	yellow	002243011	0,6	15/300
35	black	002243012	0,5	15/300
50	white	002243013	0,4	15/300

Their function is to limit the use of D0 fuse-links to user prescribed rated currents. The gauge piece can be inserted into the holder, when the fuse holder is extracted from the housing.



Adapter

I_n [A]	Colour	Code No.	Weight [g]	Packaging [pcs]
6	green	002243018	2,5	20/200
10	red	002243019	2,5	20/200
16	grey	002243020	2,5	20/200

Its function is to allow the use of D01 fuse-links (2-16A) with the fuse-switch-disconnector STV D02.



STVD02 set

STVD02 set includes a switch-disconnector-fuse, gauge pieces of all sizes and adapters of all sizes.

STVD02 set

title	Code No.	Packaging [pcs]
STV D02 1p set	002271101	12/96
STV D02 1p+N set	002271102	6/48
STV D02 2p set	002271103	6/48
STV D02 3p set	002271104	4/32
STV D02 3p+N set	002271105	3/24